

# SLP-TX400

4 inch Thermal Transfer  
Desktop Label Printer



Retail



Warehouse



Healthcare



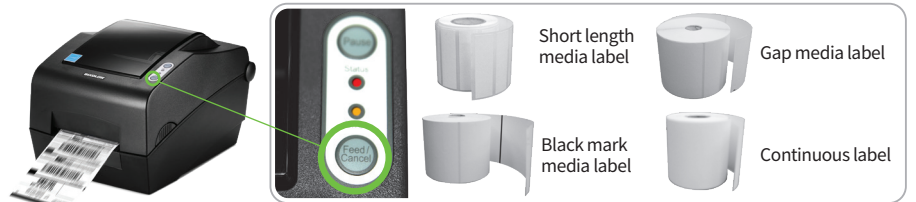
Post &  
Parcel

## Smart and Premium



### Enhanced RFID Convenience

- Embedded RFID + Ethernet + Auto Cutter (Optional)
- Extremely closely spaced RFID inlay is encoded and it reduces media waste and media replacement cycle
- Set up the configuration, write and read setting value by label unified utility



### Premium-Level Performance

- Fully Compatible with Market-Leading Programming Languages
- Fast Data Processing and Printing Speed up to 7 ips (178 mm/sec)
- Smart Media Detection™: Automatic paper detection
- Fast data processing speed of various types of label

### User-Friendly Design

- All in one Plus™ Interface
  - Standard : USB + Serial + Parallel
  - Optional : USB + Ethernet + Serial + WLAN
- Wide range of ribbon roll length from 74m to 300m
- Easy paper loading with adjustable paper guide
- Pause and cancel function-keys



# SLP-TX400

4 inch Thermal Transfer  
Desktop Label Printer

## Specifications

### Printer Specifications

#### Print Method

Thermal Transfer, Direct Thermal

#### Print Speed

SLP-TX400: Up to 7 ips (178 mm/sec)  
SLP-TX403: Up to 5 ips (127 mm/sec)

#### Print Resolution

SLP-TX400: 203 dpi  
SLP-TX403: 300 dpi

#### Print Width

SLP-TX400: Up to 108 mm  
SLP-TX403: Up to 105.7 mm

#### Print Length

Up to 1,000 mm

#### Sensor

Transmissive, Reflective (Adjustable),  
Ribbon-End, Head open

### Media Characteristics

#### Media Type

Gap, Black Mark, Notch, Continuous, Fan-Fold

#### Media Width

25 ~ 112 mm

#### Media Roll Diameter

Up to 130 mm

#### Media Thickness

0.06 ~ 0.20 mm

#### Supply Method

Easy Paper Loading

#### Inner Core

25.4 ~ 38.1mm

### Ribbon Characteristics

#### Ribbon Type

Wax, Wax/Resin, Resin, Outside

#### Ribbon Width

33 ~ 110 mm

#### Ribbon Length

Up to 300 m

#### Core Inner Diameter

25.4 mm, 12.5 mm

### Physical Characteristics

#### Dimensions (WxDxH)

214 x 310 x 195 mm  
(8.42 x 12.20 x 7.67 inch)

#### Weight

2.85 kg (6.28 lbs.)

#### Electrical

EnergyStar Certified,  
External Power Adaptor 100-240V AC, 50/60Hz

### Performance Characteristics

#### Memory

64 MB SDRAM, 128 MB Flash

#### Interface

Standard: USB + Serial + Parallel  
Optional: ① USB + Serial + Ethernet + WLAN<sup>1</sup>  
② USB + Serial + Ethernet + Bluetooth<sup>2</sup>

SLP-TX400R(RFID)

USB + Serial + Ethernet + Bluetooth<sup>2</sup> / WLAN<sup>1</sup>  
+ RFID

WLAN<sup>1</sup>: 802.11a/b/g/n/ac USB dongle type  
(Optional)

Bluetooth<sup>2</sup>: USB dongle type (Optional)

#### Real Time Clock

Supported

### Environment Characteristics

#### Temperature

Operating: 5 ~ 40°C (41 ~ 104°F)  
Storage: -20 ~ 60°C (-4 ~ 140°F)

#### Humidity

Operating: 10 ~ 80% RH  
Storage: 10 ~ 90% RH

### Software

#### Emulation

SLCS™, BPL-Z™, BPL-E™

#### Driver / Utility

Windows Driver (Europlus / Seagull),  
Linux / Mac CUPS Driver,  
Virtual COM USB / Ethernet Driver,  
Utility Program, OPOS / JPOS Driver,  
Bartender Ultralite for BIXOLON, Label Artist-II™,  
SAP® Device Driver

#### SDK / Plugin

Android / iOS / Windows SDK, Linux SDK,  
Chrome SDK, Xamarin SDK

#### Application

Label Artist™ Mobile (Android, iOS),  
mPrint App (iOS), mPrint Server (Windows, iOS)

#### MDM

BIXOLON Profile Manager  
- XPM™, XCM™ (Windows, Android)

### Fonts / Graphics / Symbologies

#### Fonts

- 10 SLCS Resident Bitmap Fonts
- One SLCS Resident Scalable Font
- 16 BPL-Z™ Resident Bitmap Fonts
- One BPL-Z™ Resident Scalable Font
- 5 BPL-E™ Resident Bitmap Fonts
- 23 Code Page
- Unicode supported (UTF-8, UTF-16LE, UTF-16BE)

#### Graphics

Supporting user-defined fonts, graphics,  
formats, and logos

#### Barcode Symbologies

- 1D: Codabar, Code 11, Code 39, Code 93,  
Code 128, EAN-13, EAN-8, Industrial 2-of-5,  
Interleaved 2-of-5, Logmars, MSI, Plessey,  
Postnet, GS1 DataBar (RSS-14),  
Standard 2-of-5, UPC / EAN extensions,  
UPC-A, UPC-E, IMB
- 2D: Aztec, Codablock, Code 49, Data Matrix,  
MaxiCode, MicroPDF417, PDF417, QR code,  
TLC 39

### Accessories

#### Options

RFID, Peeler, Auto Cutter, External Paper Supply,  
WLAN Dongle(Consensus required)

#### RFID

#### Frequency

UHF, 865 ~ 868MHz(EU),  
902 ~ 928MHz(KR, USA, CHN)

#### Transmit Power

1W

#### Modulation

ASK

#### Protocol

UHF EPC Class 1 Gen 2 V1.2/ ISO 18000-6C

#### Auto Cutter

Optional

#### Tag Pitch

Min 25mm