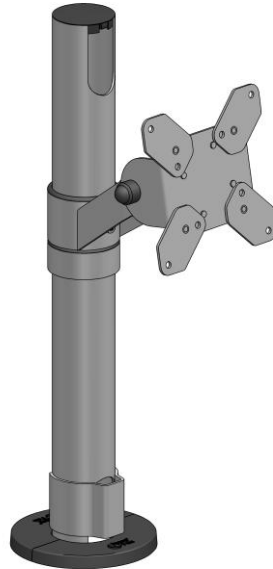


Project Configuration Sheet – SPV1101-nn

VESA 75/100 Pole Mount SpacePole Screen Mount, VESA 75/100 Version 1.3



Parts List

Part No.	Description	Qty	Assemble	Box
SP2-1994-0400	Pole SP2, 400mm w/SNikey Flange, top & bottom Cable Slot and End Cap (SP2-P22104-02)	1		1
SP2-7104	SP2 Pole Mount Locking Connection Arm, angled, with Velcro (M22154-02) and Bolt Caps (M22116-02)	1	1	1
4118081	Adjustable VESA 75/100 (4 x M9931-0004, 4 x M9941-0004, 4 x M22114-02), with 4x M4x10mm and 4x M4x6mm screws (MK8-0003)	1	1	1
SP2-21210	Lockring SP2	1		1
SP2-P22700-0040	Cable Clip SP2, 40mm	1		1
SP2-P22510	Flange Cover, SP2	1		1

Fixings

	Description	Qty	Box
MK0-0006	Fixing pack with bolt through & self tappers	1	1

Installation Guide

MK15-0165

Box B003

Box Label MK15-0026 – SPV1101-nn – VESA75/100 Pole Mount – SpacePole Screen Mount, VESA 75/100 - V 1.3

Colour	<nn>	01	Light Grey
		02	Black
		03	Silver
		04	Pearl
		05	Iron Grey